

PRELIMINARY TYPICAL STREET SECTION
N.T.S.

NOTES:
CONTRACTOR SHALL MAINTAIN 3" VERTICAL SEPARATION BETWEEN TOP OF SUBGRADE AND EXPANSIVE SOILS.
TYPICAL SECTION SHOWN IS PRELIMINARY AND SHALL BE VERIFIED BY A PAVEMENT DESIGN, DETERMINED FROM A GEOTECHNICAL ENGINEERING REPORT.



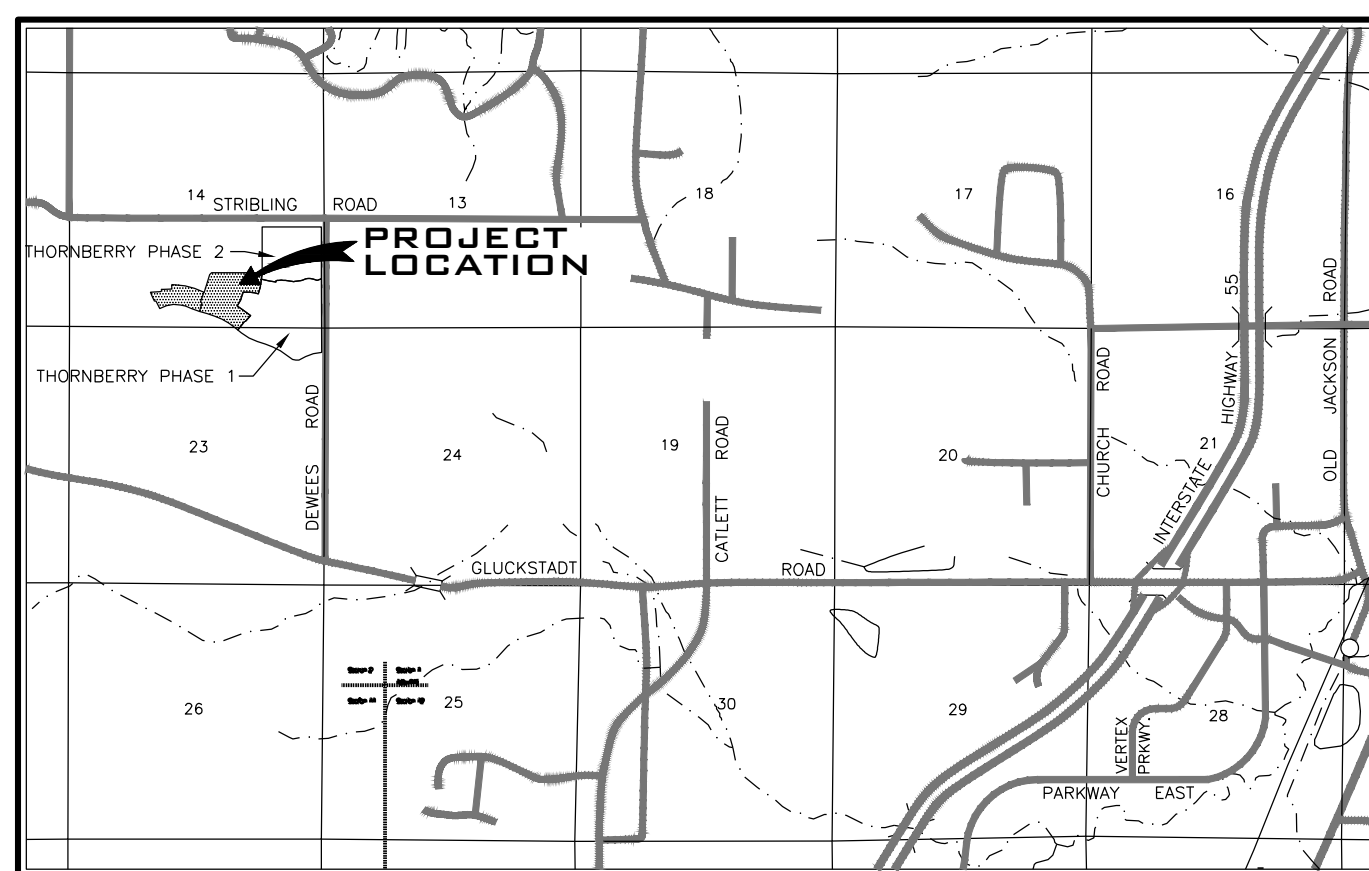
OWNER:
THORNBERRY DEVELOPMENT, LLC
124 ONE MADISON PLAZA STE.
1500 MADISON, MS 39110
PH. 601-750-5111

SURVEYOR'S CERTIFICATE OF COMPLIANCE
STATE OF MISSISSIPPI COUNTY OF MADISON

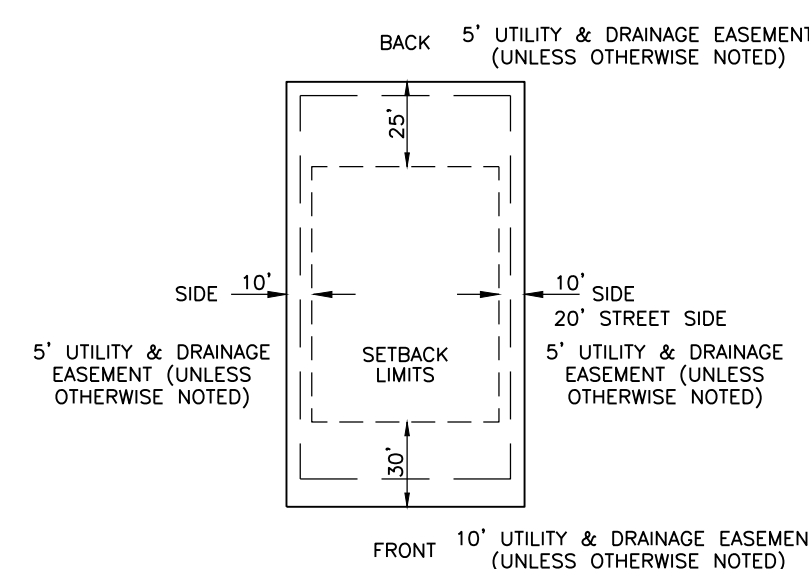
I, RONALD C. McMASTER, JR., PROFESSIONAL ENGINEER AND SURVEYOR, DO HEREBY CERTIFY THAT THE MONUMENTS AND MARKERS SHOWN HEREON ARE IN PLACE ON THE GROUND AND THE PLAT AND PLAN SHOWN AND DESCRIBED HEREON ARE A TRUE AND CORRECT REPRESENTATION OF A SURVEY TO THE ACCURACY DESIGNATED IN THE SUBDIVISION REGULATIONS FOR MADISON COUNTY, MISSISSIPPI.

WITNESS MY SIGNATURE THIS THE _____ DAY OF _____, 2022.

RONALD C. McMASTER, JR., PROFESSIONAL ENGINEER AND SURVEYOR



VICINITY MAP
SCALE: N.T.S.



TYPICAL LOT DETAIL
N.T.S.

CENTERLINE CURVE DATA

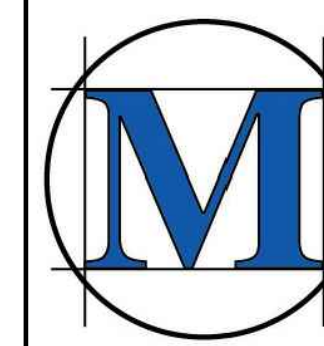
"A"	"B"	"C"
Δ = 16°59'01"	Δ = 08°04'50"	Δ = 02°00'11"
D = 06°56'42"	D = 07°50'55"	D = 04°39'30"
T = 123.18'	T = 51.56'	T = 21.50'
L = 244.54'	L = 102.95'	L = 43.00'
R = 825.00'	R = 730.00'	R = 1230.00'
"E"	"F"	"G"
Δ = 07°38'54"	Δ = 52°55'54"	Δ = 08°21'24"
D = 04°25'20"	D = 06°28'27"	D = 05°30'33"
T = 197.52'	T = 440.59'	T = 75.98'
L = 394.46'	L = 817.59'	L = 151.68'
R = 2955.00'	R = 885.00'	R = 1040.00'

Revisions

#	Date	Nature	By	App'd.

Project No.	M-2376-3-2	Designed By	R.C.M.
Date	01-21-22	Drawn By	N.S.G.
Scale	SEE ABOVE	Checked By	R.C.M.

THORNBERRY, PHASE 3A & 3B
MADISON COUNTY, MISSISSIPPI



M-McMASTER & ASSOCIATES, INC.
CIVIL ENGINEERS & LAND SURVEYORS

212 WATERFORD SQUARE
SUITE 300
MADISON, MS 39110
601.605.1090

NOT FOR CONSTRUCTION

PRELIMINARY PLAT

1